

# Exchange rate import from the Bank of Lithuania manual

**2020 September**

**v1.0.4.0**

# Table of Contents

- 1 EXCHANGE RATE IMPORT FROM THE BANK OF LITHUANIA – HOW TO START..... 3**
- 2 INITIAL SETUP ..... 3**
- 3 EXCHANGE RATE IMPORT ..... 3**
- 4 CREATION OF PERIODIC JOB CURRENCY IMPORT ..... 6**
- 5 PICTURE LIST ..... 7**

## 1 Exchange rate import from the Bank of Lithuania – how to start

This document is a user guide that describes how to perform initial setup and use the Exchange rate import from the Central Bank of Lithuania (LB) functionality.

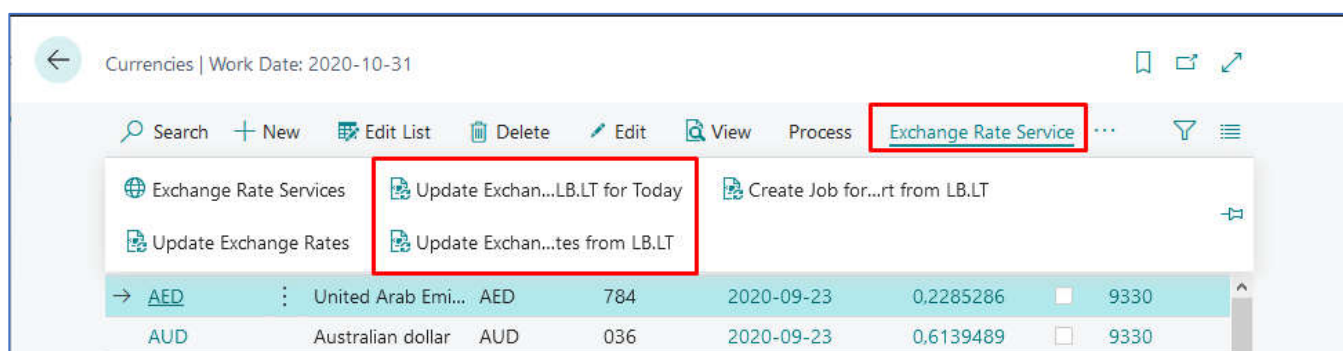
## 2 Initial setup

The default settings are imported during the installation of the extension, without the need for the user to do so. Missing settings are created by the system for the first time during the execution of the exchange rate import function.

## 3 Exchange rate import

This functionality is intended to update exchange rates in the system currency list according to the daily accounting rates provided by LB (Lithuania Bank). The exchange rate import can be executed periodically or at any time. Exchange rates can also be imported for a preferred date or period.

The exchange rate import functions are available through the Currency list Currencies > Exchange Rate Service

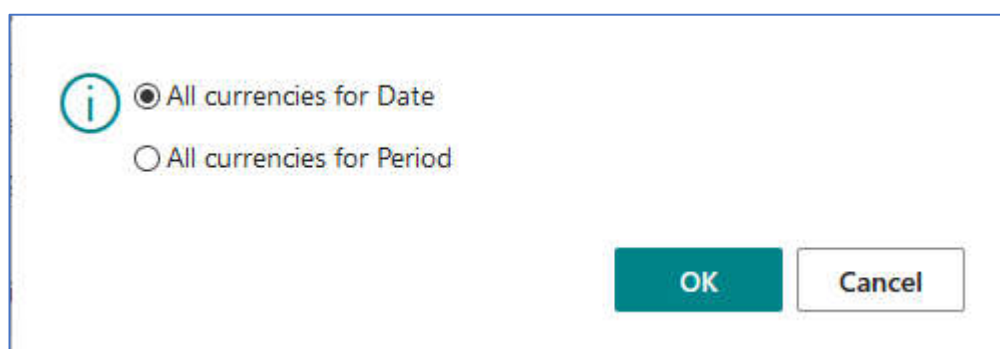


Picture 1 Update exchange rates from LB

By selecting the “Update Exchange Rates from LB.LT for Today” function, the system will import the exchange rates for the working day.

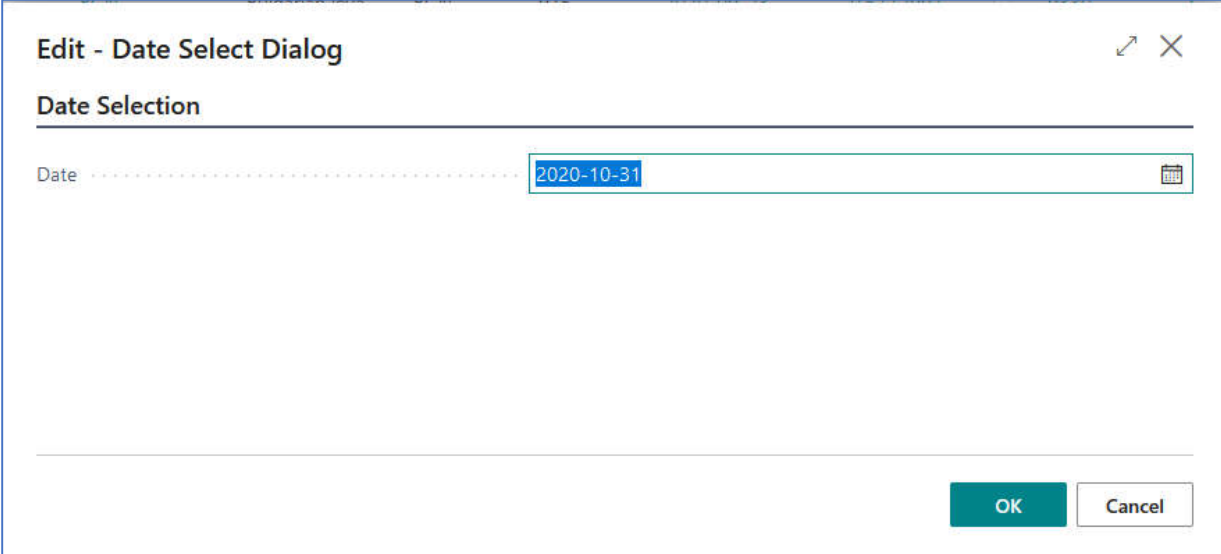
By selecting the “Update Exchange Rates from LB.LT” function, the system will allow you to choose:

- to import exchange rates for the selected date
- or selected period.



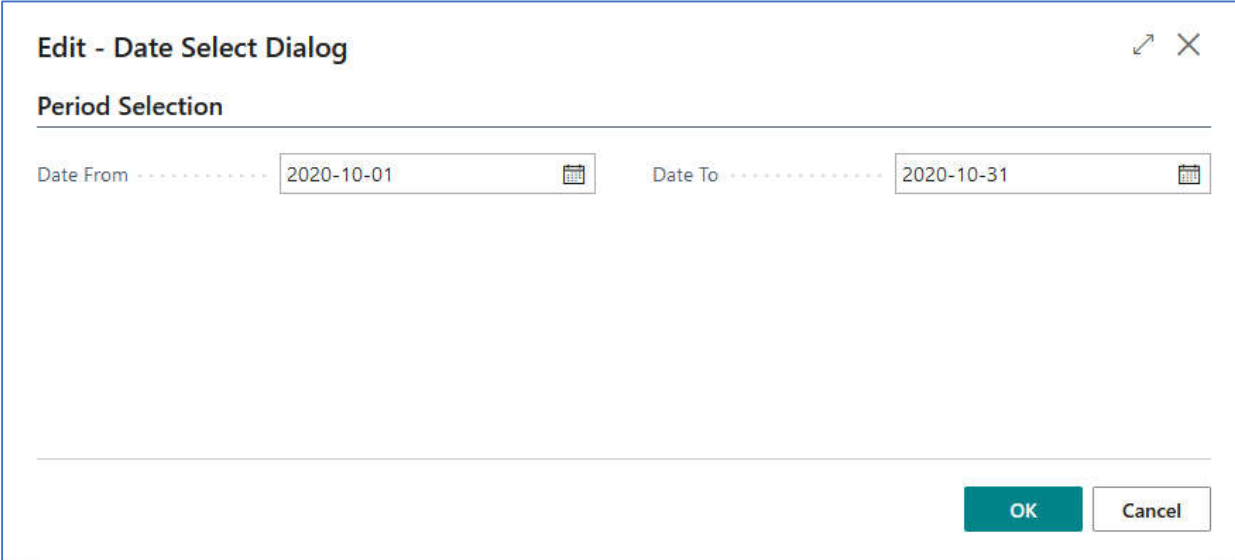
Picture 2 Update exchange rates from LB for date or period

In the next step, after selecting the date filter and clicking "OK", the system will import the exchange rates for the selected date or period.



The screenshot shows a dialog box titled "Edit - Date Select Dialog" with a close button (X) and a refresh button (↶) in the top right corner. Below the title is a section header "Date Selection". A text input field labeled "Date" contains the date "2020-10-31" and has a calendar icon to its right. At the bottom right of the dialog are two buttons: "OK" (teal) and "Cancel" (white with grey border).

Picture 3 Update exchange rates from LB for date



The screenshot shows a dialog box titled "Edit - Date Select Dialog" with a close button (X) and a refresh button (↶) in the top right corner. Below the title is a section header "Period Selection". There are two text input fields: "Date From" containing "2020-10-01" and "Date To" containing "2020-10-31", each with a calendar icon to its right. At the bottom right of the dialog are two buttons: "OK" (teal) and "Cancel" (white with grey border).

Picture 4 Update exchange rates from LB for period

The history of imported exchange rates can be viewed by clicking on the exchange rate in the Currency list.

Currencies | Work Date: 2020-10-31

Search + New Edit List Delete Edit View Process Exchange Rate Service ...

Code ↑	Description	ISO Code	ISO Numeric Code	Exchange Rate Date	Exchange Rate	EMU Curr...	Realized Gains Acc.	F /
→ AED	United Arab Emi...	AED	784	2020-09-23	0,2285286	<input type="checkbox"/>	9330	
AUD	Australian dollar	AUD	036	2020-09-23	0,61394	<input type="checkbox"/>	9330	Open record "0,2285286"
BGN	Bulgarian leva	BGN	975	2020-09-23	0,5112997	<input type="checkbox"/>	9330	

Picture 5 Exchange rate history

### Edit - Currency Exchange Rates - AED

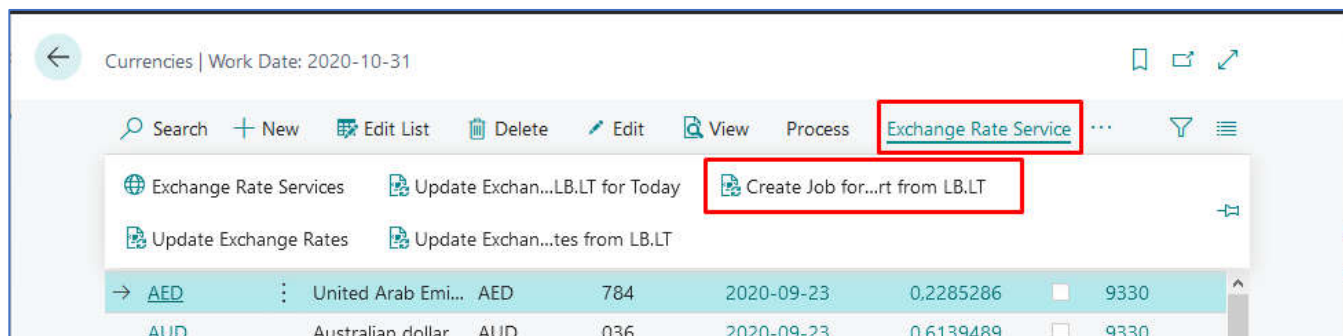
Search + New Edit List Delete Open in Excel

Starting Date ↑	Currency Code ↑ ▼	Relational Currency Code	Exchange Rate Amount	Relational Exch. Rate Amount	Adjustment Exch. Rate Amount	Relational Adjmt Exch Rate Amt	Fix Exchange Rate Amount
→ 8-01-01	AED		100,0	23,3753	100,0	23,3753	Currenc
2020-09-23	AED	EUR	4,37582	1,0	4,37582	1,0	Relation

Picture 6 Exchange rate history entries

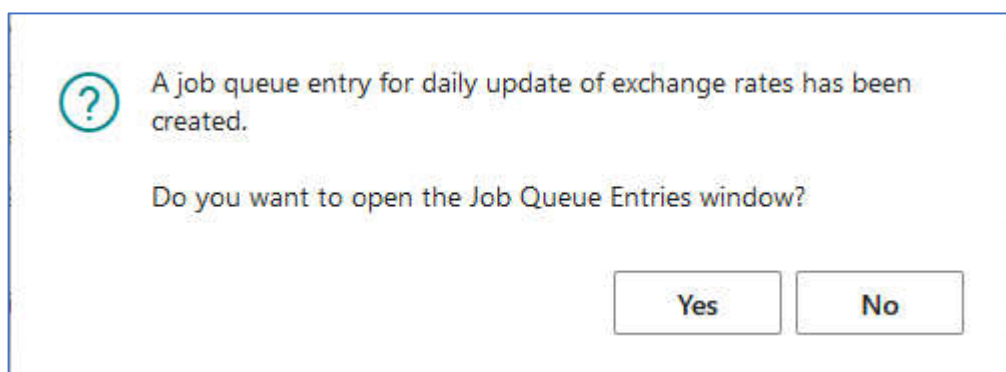
## 4 Creation of periodic job currency import

For the convenience of the user, the functionality includes the ability to import exchange rates every day at 8 am without user intervention. To set periodic import of exchange rates, in the Currency list select Currency > Exchange Rate Service > Create Job for Exchange Rates import from LB.LT.



Picture 7 Create Job for exchange rates import form LB

When the system generates an entry in the job queue, a message is received.



Picture 8 Open Job Queue

In the message window, choosing to open the Job Queue Entries window > Yes will open the exchange rate import job queue card, where you can adjust the time or frequency of the exchange rate import.

## 5 Picture list

Picture 1 Update exchange rates from LB.....	3
Picture 2 Update exchange rates from LB for date or period.....	3
Picture 3 Update exchange rates from LB for date.....	4
Picture 4 Update exchange rates from LB for period.....	4
Picture 5 Exchange rate history.....	5
Picture 6 Exchange rate history entries.....	5
Picture 7 Create Job for exchange rates import form LB.....	6
Picture 8 Open Job Queue.....	6